

**NOTES:**  
1. ALL DIMENSIONS ARE IN MILLIMETERS AND LEVELS ARE IN METER, UNLESS OTHERWISE SPECIFIED.  
2. DIMENSIONS ARE NOT TO BE SCALED. ONLY WRITTEN DIMENSIONS ARE TO BE FOLLOWED.

FILE NAME : X:\708 - SENAPATI BAPAT\WORKING\708-FDD-FLY-1001.R0.dwg

RO	03/12/21	FOR APPROVAL	SPP
REV. NO.	DATE	DESCRIPTION	DRAWN

OWNER  
MUNICIPAL CORPORATION OF GREATER MUMBAI

**SPECTRUM** Techno Consultants Pvt Ltd  
Navi Mumbai-India.

PROJECT  
CONSULTANCY SERVICES FOR CONSTRUCTION OF ELEVATED ROAD/BRIDGE FROM FISHERMEN COLONY (SENAPATI BAPAT MARG) TO W.E. HIGHWAY (BANDRA)

DESIGNED BY : SNK  
REVIEWED BY : ASH  
APPROVED BY : SMR  
DATE : 03/12/2021  
SCALE : 1:1000

TITLE  
GENERAL ARRANGEMENT DRAWING  
DRG. NO. 708/TD/FLY/1001  
REV. NO. RO  
(SHEET 1 OF 5)  
THIS DRAWING IS THE PROPERTY OF SPECTRUM Techno Consultants Pvt Ltd IT IS SUBJECT TO THEIR RECALL, AND MUST NOT BE LENT, COPIED OR REPRODUCED WITHOUT THEIR WRITTEN PERMISSION.

**NOTES:**

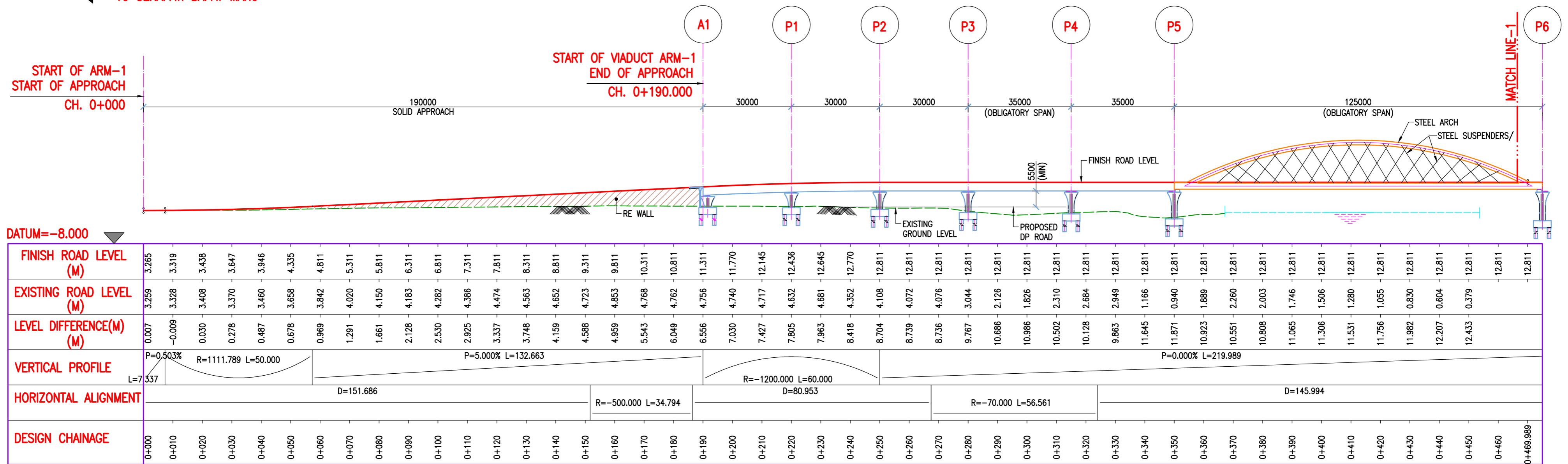
- 1. ALL DIMENSIONS ARE IN MILLIMETERS AND LEVELS ARE IN METER, UNLESS OTHERWISE SPECIFIED.
- 2. DIMENSIONS ARE NOT TO BE SCALED. ONLY WRITTEN DIMENSIONS ARE TO BE FOLLOWED.

**LEGENDS**

- PROPOSED ALIGNMENT
- GROUND LEVEL
- DP LINE - DEVELOPMENTAL PLAN LINE
- MAIN FLYOVER
- SLIP ROAD
- SOLID APPROACH

← TO SENAPATI BAPAT MARG

TO BANDRA WORLI SEA LINK →



**LONGITUDINAL ELEVATION OF ARM-1**

FILE NAME : X:\708 - SENAPATI BAPATI\WORKING\708-FDD-FLY-1001.R0.dwg

REV. NO.	DATE	DESCRIPTION	DRAWN
R0	03/12/21	FOR APPROVAL	SPP

OWNER OWNER  
 MUNICIPAL CORPORATION OF GREATER MUMBAI

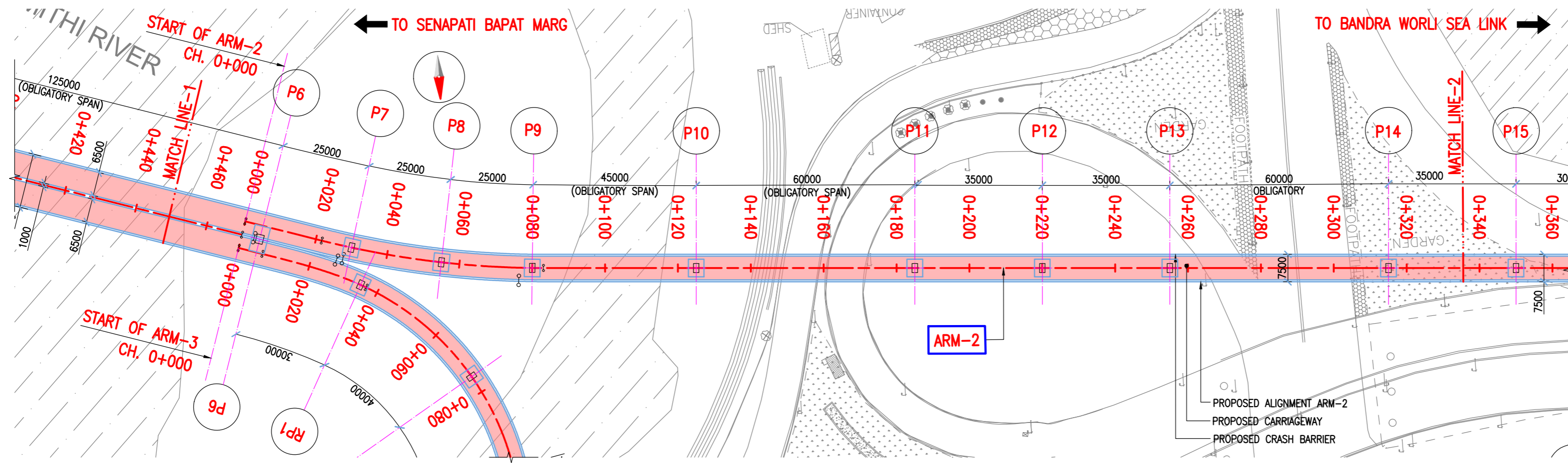
SPECTRUM Techno Consultants Pvt Ltd  
 Navri Mumbai-India.

PROJECT  
 CONSULTANCY SERVICES FOR CONSTRUCTION OF  
 ELEVATED ROAD/BRIDGE FROM FISHERMEN COLONY  
 (SENAPATI BAPAT MARG) TO W.E. HIGHWAY ( BANDRA)

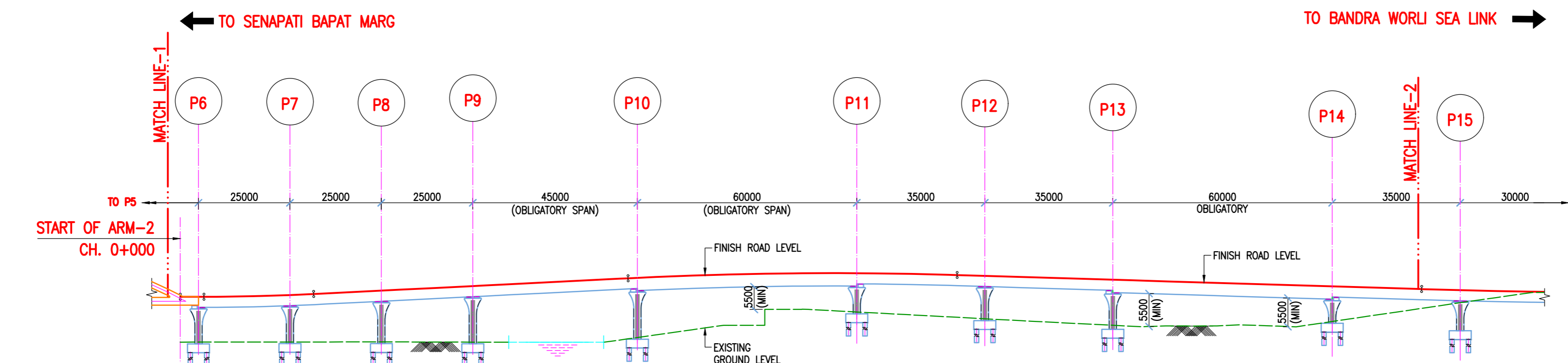
DESIGNED BY :	SNK
REVIEWED BY :	ASH
APPROVED BY :	SMR
DATE	03/12/2021
SCALE	1:1000

TITLE  
**GENERAL ARRANGEMENT DRAWING**  
 DRG.NO. **708/TD/FLY/1001**  
 (SHEET 2 OF 5)  
 THIS DRAWING IS THE PROPERTY OF SPECTRUM Techno Consultants Pvt Ltd IT IS SUBJECT TO THEIR RECALL, AND MUST NOT BE LENT, COPIED OR REPRODUCED WITHOUT THEIR WRITTEN PERMISSION.

**NOTES:**  
 1. ALL DIMENSIONS ARE IN MILLIMETERS AND LEVELS ARE IN METER, UNLESS OTHERWISE SPECIFIED.  
 2. DIMENSIONS ARE NOT TO BE SCALED. ONLY WRITTEN DIMENSIONS ARE TO BE FOLLOWED.



**PLAN**



**LONGITUDINAL ELEVATION OF ARM-2**

FINISH ROAD LEVEL (M)	12.731	12.741	12.883	13.192	13.657	14.157	14.657	15.157	15.657	16.157	16.657	17.157	17.657	18.132	18.520	18.819	19.028	19.149	19.181	19.123	18.977	18.741	18.442	18.140	17.838	17.536	17.234	16.932	16.630	16.328	16.026	15.724	15.422	15.120	14.818	14.541	14.311	14.126
EXISTING ROAD LEVEL (M)	0.342	0.354	0.365	0.376	0.384	0.389	0.391	0.366	0.333	0.304	0.305	0.310	0.281	2.292	3.723	4.952	9.294	9.350	8.839	8.309	7.780	7.250	6.720	6.191	5.665	5.187	4.690	4.777	4.755	5.047	4.715	5.247	6.711	8.175	9.640	11.098	12.525	13.918
LEVEL DIFFERENCE (M)	12.389	12.388	12.518	12.816	13.273	13.768	14.266	14.792	15.325	15.853	16.352	16.847	17.366	15.840	14.797	13.866	9.734	9.800	10.342	10.814	11.197	11.490	11.721	11.949	12.163	12.348	12.543	12.165	11.875	11.280	11.310	10.477	8.710	6.944	5.178	3.444	1.786	0.208
VERTICAL PROFILE	P=0.000% L=6.478		R=600.000 L=30.000		P=5.000% L=85.960								R=-1122.195 L=90.000								D=312.375				P=-3.020% L=127.004				R=2175.214 L=60.000									
HORIZONTAL ALIGNMENT	D=21.626		R=-250.000 L=61.437																																			
DESIGN CHAINAGE	0+000	0+010	0+020	0+030	0+040	0+050	0+060	0+070	0+080	0+090	0+100	0+110	0+120	0+130	0+140	0+150	0+160	0+170	0+180	0+190	0+200	0+210	0+220	0+230	0+240	0+250	0+260	0+270	0+280	0+290	0+300	0+310	0+320	0+330	0+340	0+350	0+360	0+370

FILE NAME : X:\708 - SENAPATI BAPAT\WORKING\708-FDD-FLY-1001.R0.dwg

RO	03/12/21	FOR APPROVAL	SPP
REV. NO.	DATE	DESCRIPTION	DRAWN

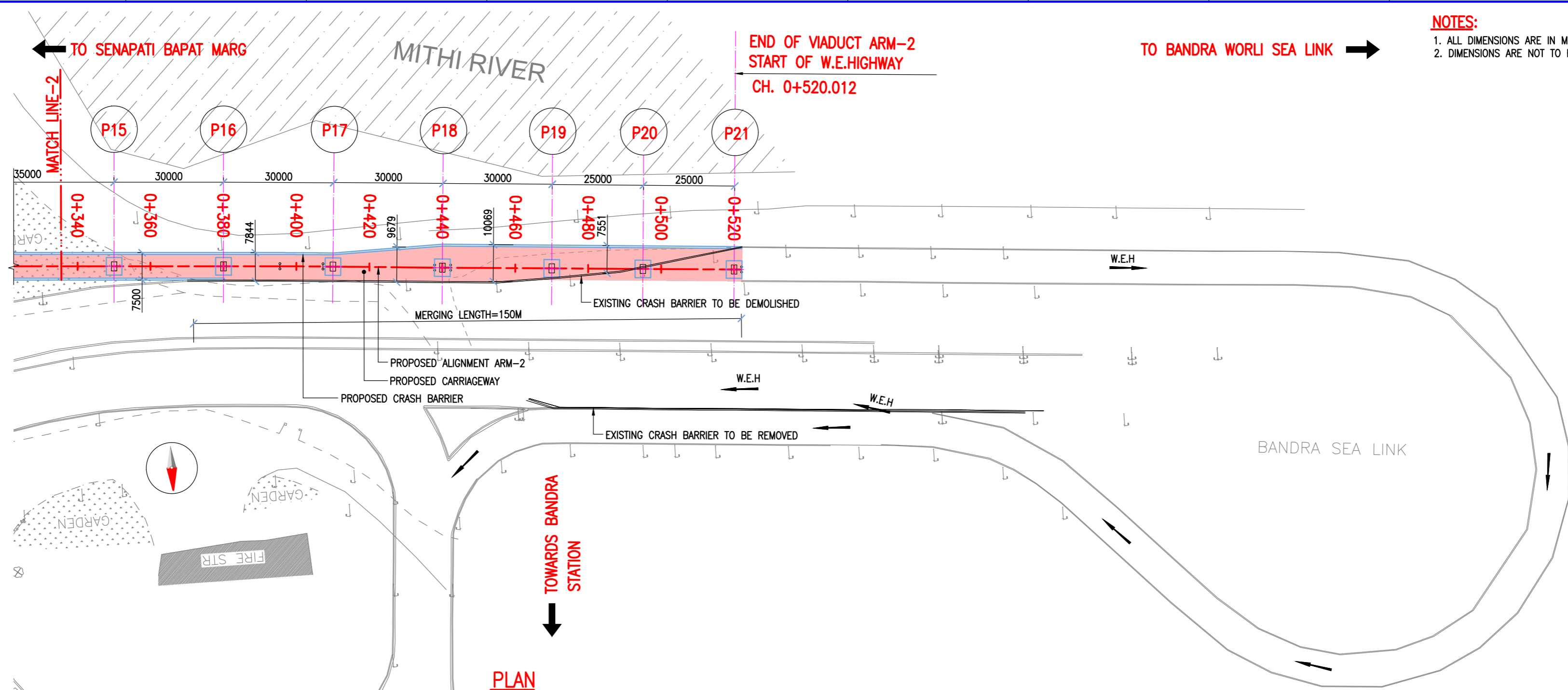
OWNER OWNER  
 MUNICIPAL CORPORATION OF GREATER MUMBAI

**SPECTRUM Techno Consultants Pvt Ltd**  
 Navli Mumbai-India.

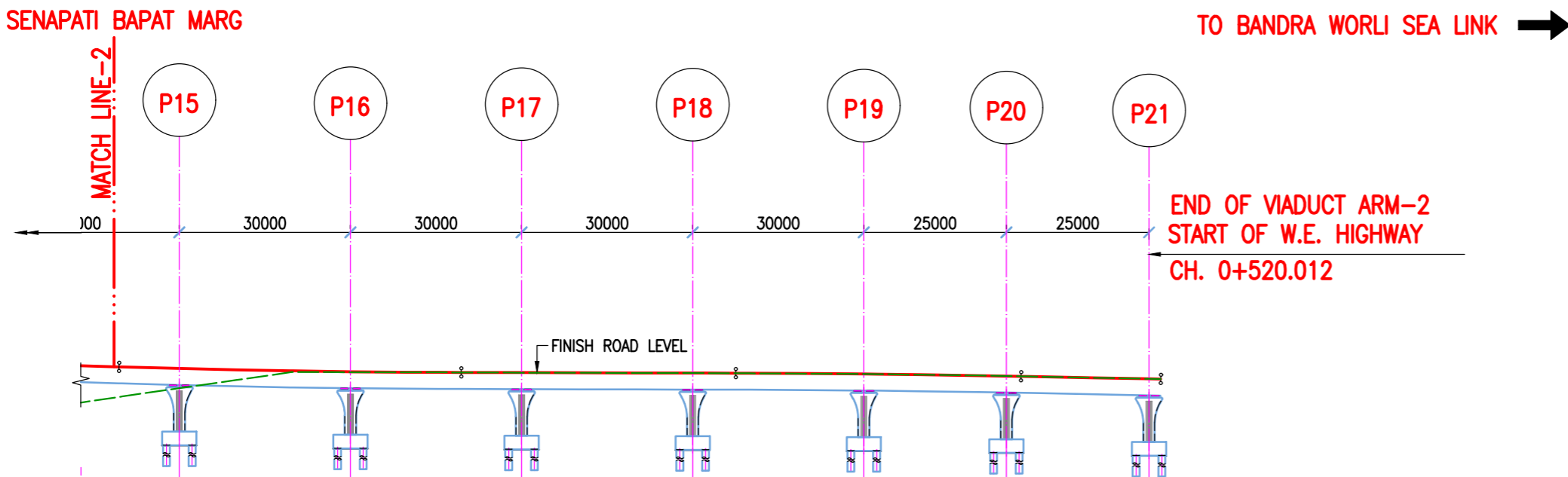
PROJECT  
 CONSULTANCY SERVICES FOR CONSTRUCTION OF  
 ELEVATED ROAD/BRIDGE FROM FISHERMEN COLONY  
 (SENAPATI BAPAT MARG) TO W.E. HIGHWAY ( BANDRA)

DESIGNED BY :	SNK
REVIEWED BY :	ASH
APPROVED BY :	SMR
DATE	03/12/2021
SCALE	1:1000

TITLE <b>GENERAL ARRANGEMENT DRAWING</b>	
DRG. NO. <b>708/TD/FLY/1001</b>	REV. NO. RO
THIS DRAWING IS THE PROPERTY OF SPECTRUM Techno Consultants Pvt Ltd IT IS SUBJECT TO THEIR RECALL, AND MUST NOT BE LENT, COPIED OR REPRODUCED WITHOUT THEIR WRITTEN PERMISSION.	



**PLAN**



<b>FINISH ROAD LEVEL (M)</b>	14.818	14.541	14.311	14.126	13.988	13.895	13.849	13.822	13.796	13.770	13.744	13.717	13.665	13.580	13.462	13.309	13.124	12.929	12.734
<b>EXISTING ROAD LEVEL (M)</b>	9.640	11.098	12.525	13.918	13.901	13.883	13.853	13.819	13.787	13.768	13.746	13.696	13.647	13.589	13.453	13.319	13.128	12.927	12.684
<b>LEVEL DIFFERENCE (M)</b>	5.178	3.444	1.786	0.208	0.087	0.012	-0.005	0.004	0.009	0.002	-0.003	0.020	0.018	-0.008	0.009	-0.009	-0.005	0.001	0.000
<b>VERTICAL PROFILE</b>																			
<b>HORIZONTAL ALIGNMENT</b>																			
<b>DESIGN CHAINAGE</b>	0+340	0+350	0+360	0+370	0+380	0+390	0+400	0+410	0+420	0+430	0+440	0+450	0+460	0+470	0+480	0+490	0+500	0+510	0+520

**LONGITUDINAL ELEVATION OF ARM-2**

**NOTES:**  
 1. ALL DIMENSIONS ARE IN MILLIMETERS AND LEVELS ARE IN METER, UNLESS OTHERWISE SPECIFIED.  
 2. DIMENSIONS ARE NOT TO BE SCALED. ONLY WRITTEN DIMENSIONS ARE TO BE FOLLOWED.

FILE NAME : X:\708 - SENAPATI BAPAT\WORKING\708+DD-FLY-1001.RD.dwg

RO	03/12/21	FOR APPROVAL	SPP
REV. NO.	DATE	DESCRIPTION	DRAWN

OWNER OWNER  
**MUNICIPAL CORPORATION OF GREATER MUMBAI**

**SPECTRUM Techno Consultants Pvt Ltd**  
 Navi Mumbai-India.

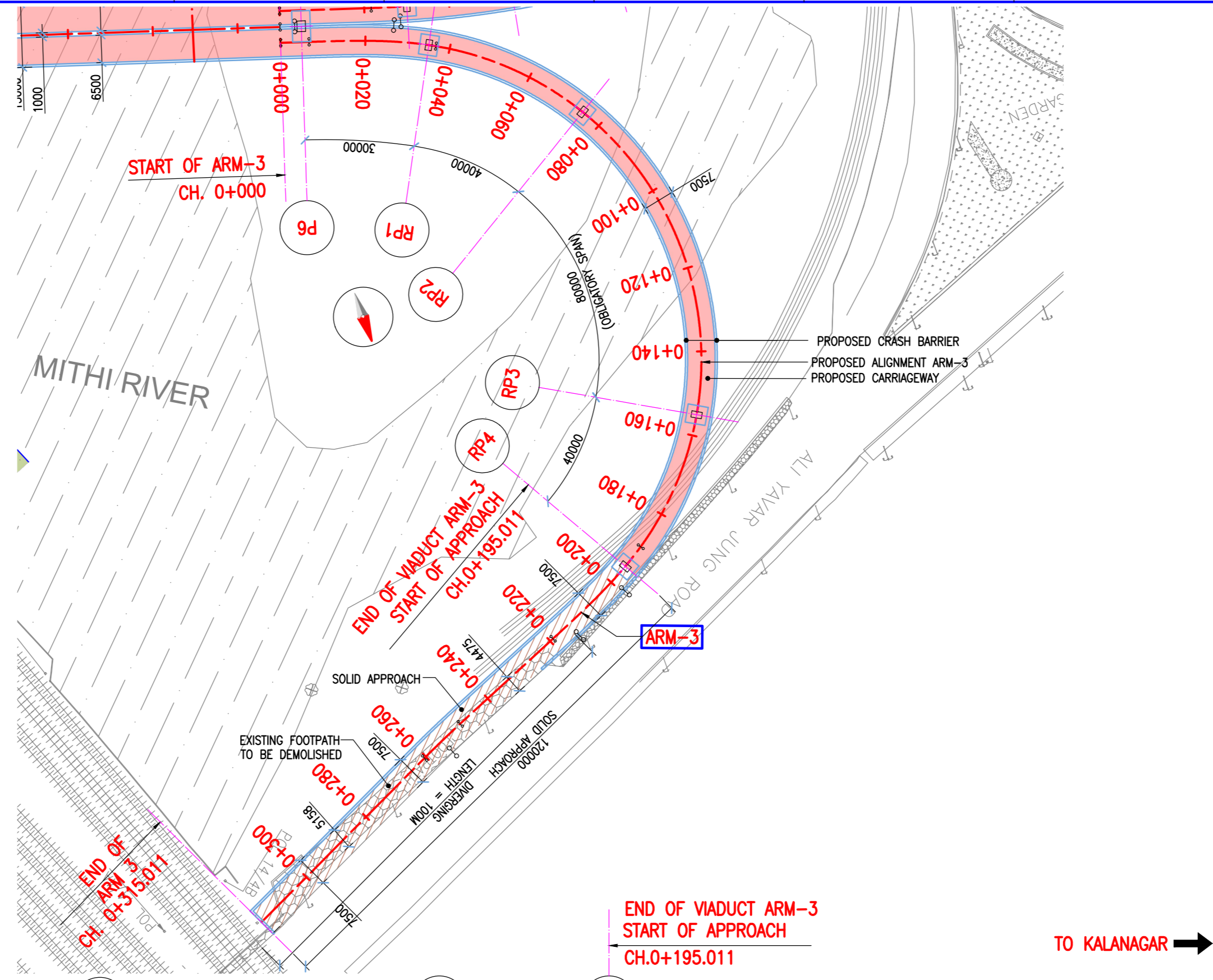
PROJECT  
 CONSULTANCY SERVICES FOR CONSTRUCTION OF ELEVATED ROAD/BRIDGE FROM FISHERMEN COLONY (SENAPATI BAPAT MARG) TO W.E. HIGHWAY ( BANDRA)

DESIGNED BY :	SNK
REVIEWED BY :	ASH
APPROVED BY :	SMR
DATE	03/12/2021
SCALE	1:1000

TITLE	<b>GENERAL ARRANGEMENT DRAWING</b>	
DRG. NO.	<b>708/TD/FLY/1001</b>	REV. NO. RO
THIS DRAWING IS THE PROPERTY OF SPECTRUM Techno Consultants Pvt Ltd IT IS SUBJECT TO THEIR RECALL, AND MUST NOT BE LENT, COPIED OR REPRODUCED WITHOUT THEIR WRITTEN PERMISSION.		

**NOTES:**  
 1. ALL DIMENSIONS ARE IN MILLIMETERS AND LEVELS ARE IN METER, UNLESS OTHERWISE SPECIFIED.  
 2. DIMENSIONS ARE NOT TO BE SCALED. ONLY WRITTEN DIMENSIONS ARE TO BE FOLLOWED.

← TO SENAPATI BAPAT MARG

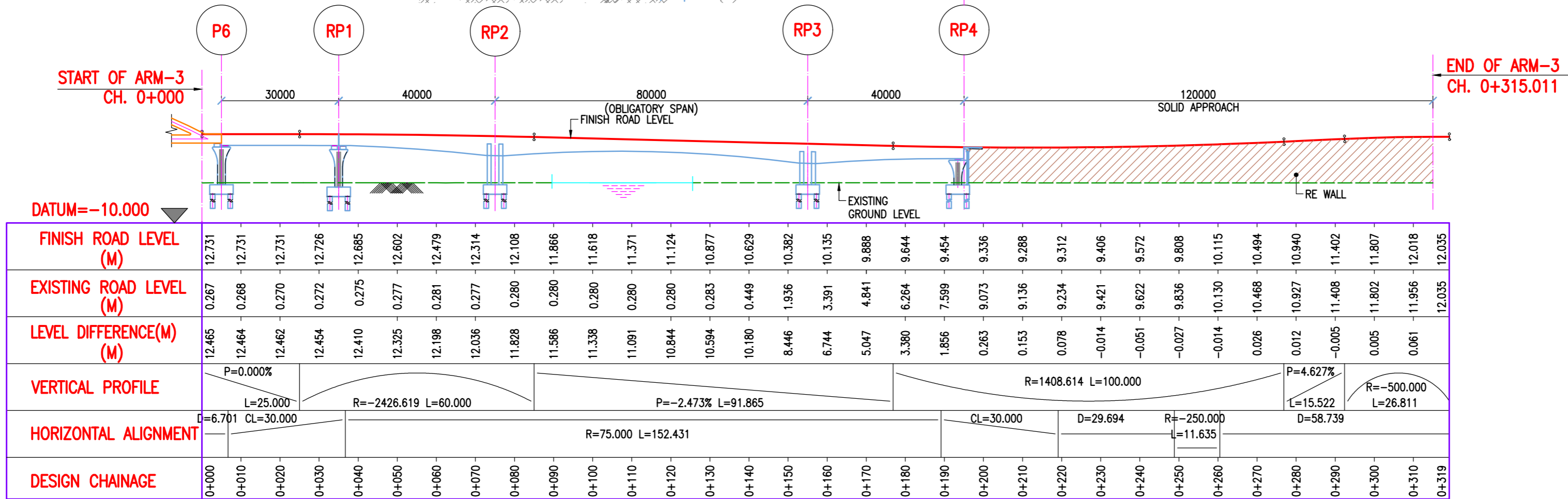


← TO SENAPATI BAPAT MARG

← TO KALANAGAR

END OF VIADUCT ARM-3  
 START OF APPROACH  
 CH. 0+195.011

→ TO KALANAGAR



**LONGITUDINAL ELEVATION OF ARM-3**

FILE NAME : X:\708 - SENAPATI BAPAT MARG\WORKING\708+DD-FLY-1001.RD.dwg

OWNER OWNER MUNICIPAL CORPORATION OF GREATER MUMBAI			DESIGNED BY : SNK			TITLE GENERAL ARRANGEMENT DRAWING		
PROJECT CONSULTANCY SERVICES FOR CONSTRUCTION OF ELEVATED ROAD/BRIDGE FROM FISHERMEN COLONY (SENAPATI BAPAT MARG) TO W.E. HIGHWAY ( BANDRA)			REVIEWED BY : ASH					
SPECTRUM Techno Consultants Pvt Ltd Navi Mumbai-India.			APPROVED BY : SMR			DRG.NO. 708/TD/FLY/1001		
DATE 03/12/2021			SCALE 1:1000			REV.NO. RO		
THIS DRAWING IS THE PROPERTY OF SPECTRUM Techno Consultants Pvt Ltd IT IS SUBJECT TO THEIR RECALL, AND MUST NOT BE LENT, COPIED OR REPRODUCED WITHOUT THEIR WRITTEN PERMISSION.			SHEET SIZE : A2 12					