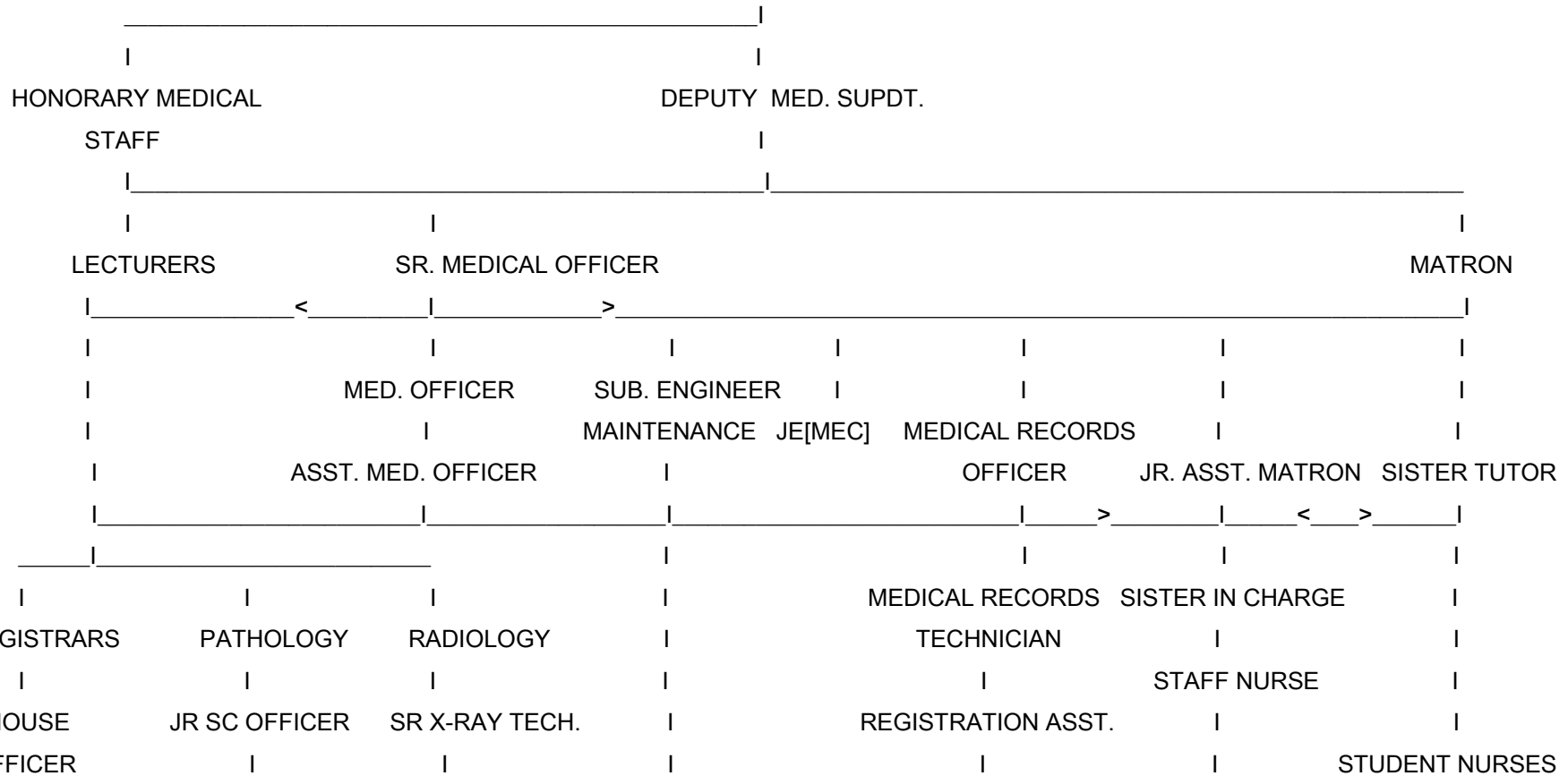




ORGANISATION & CHANNELS OF SUPERVISION

DR R N COOPER M G HOSPITAL

MEDICAL SUPERINTENDENT



( CONTD. ON NEXT PAGE)

(CONTD. FROM PREV. PAGE)

|                      |                  |                        |   |                                      |                    |
|----------------------|------------------|------------------------|---|--------------------------------------|--------------------|
|                      |                  |                        |   |                                      |                    |
|                      | LABORATORY TECH. | X-RAY TECH.            |   |                                      |                    |
|                      |                  |                        |   |                                      |                    |
| INTERNS/<br>STUDENTS | <br>LAB. ASST.   | <br>X-RAY ASST         | ELECTRICIAN<br>WIREMAN  | MORTUARY ATTENDANT<br> <br>MESSENGER | WARD/ O T<br>ASST. |
|                      | <br>LAB. SERVANT | <br>X-RAY<br>ATTENDANT | LIFTMAN-WRMN-PO<br>PLUMBER<br>CARPENTER<br>PAINTER<br>AC OPERATOR<br>AC HELPER<br>MASON |                                      |                    |

MEDICAL SUPERINTENDENT

|

|

DEPUTY MED. SUPDT.

|

|

|  
SR. MEDICAL OFFICER

|  
ASST SECURITY OFFICER

|  
MATRON

|  
ADMINISTRATIVE OFFICER

|

|

|

|

SECURITY GUARDS

|

>

|

<

|

|  
HEAD PHARMACIST

|  
COMMUNITY  
DEVELOPMENT  
OFFICER

|  
DIETICIAN

|  
PHYSIO/  
OCCUPATIONAL  
THERAPIST

|  
ECG / EEG  
TECHNICIAN

|  
CLINICS  
-SCHOOL  
-DENTAL  
-TB

|

|  
OFFICE SUPERINTENDENT

|

|

|

|

|

|

|

SR PHARMACIST

OFFICER

THERAPIST

-SCHOOL  
-DENTAL  
-TB

|

HEAD CLERKS

|

PHARMACIST

|

<

|

TIME KEEPER

STENO/ TYPIST/ CCT

|

|

HAVILDAR

CLERK

|

|

ASST. HAVILDAR

PEONS

|

LABOUR STAFF